

Installation instructions for PZ4AL- 00838- 00

LEXUS - IS 250

Under Run Protective Shield engine bay



Model Year: 2005

Vehicle Code: GSE20L-AETLHW

Part Number: PZ4AL-00838-00



Weight: 12,8 kg

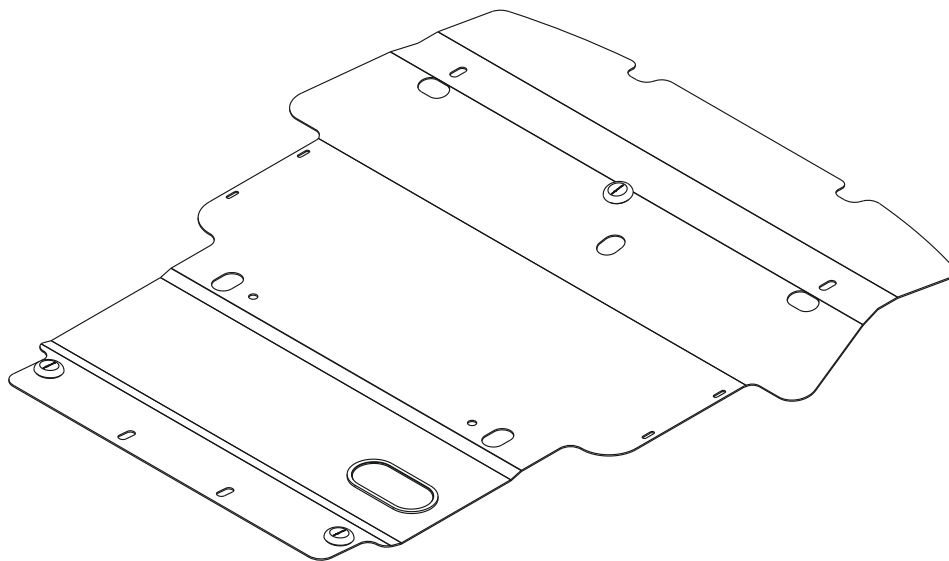


InstallationTime: 20 min

Manual reference number: AIM 002 090-0

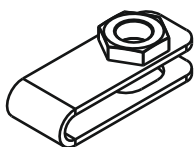
Part number: PZ4AL-00838-00

A



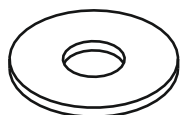
PZ4AL-08330-60

B



4 x

C



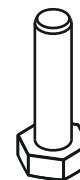
4 x Ø10

D1

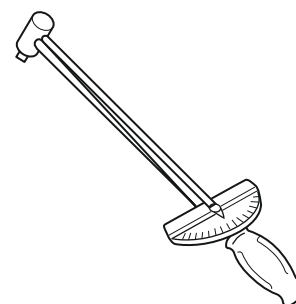
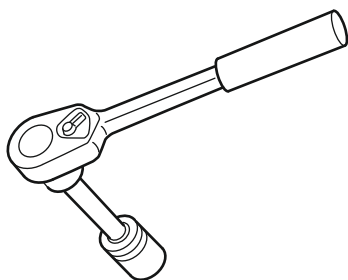


2x M10X30

D2



2x M10X40



Part number:
PZ4AL-00838-00

Issue:
0

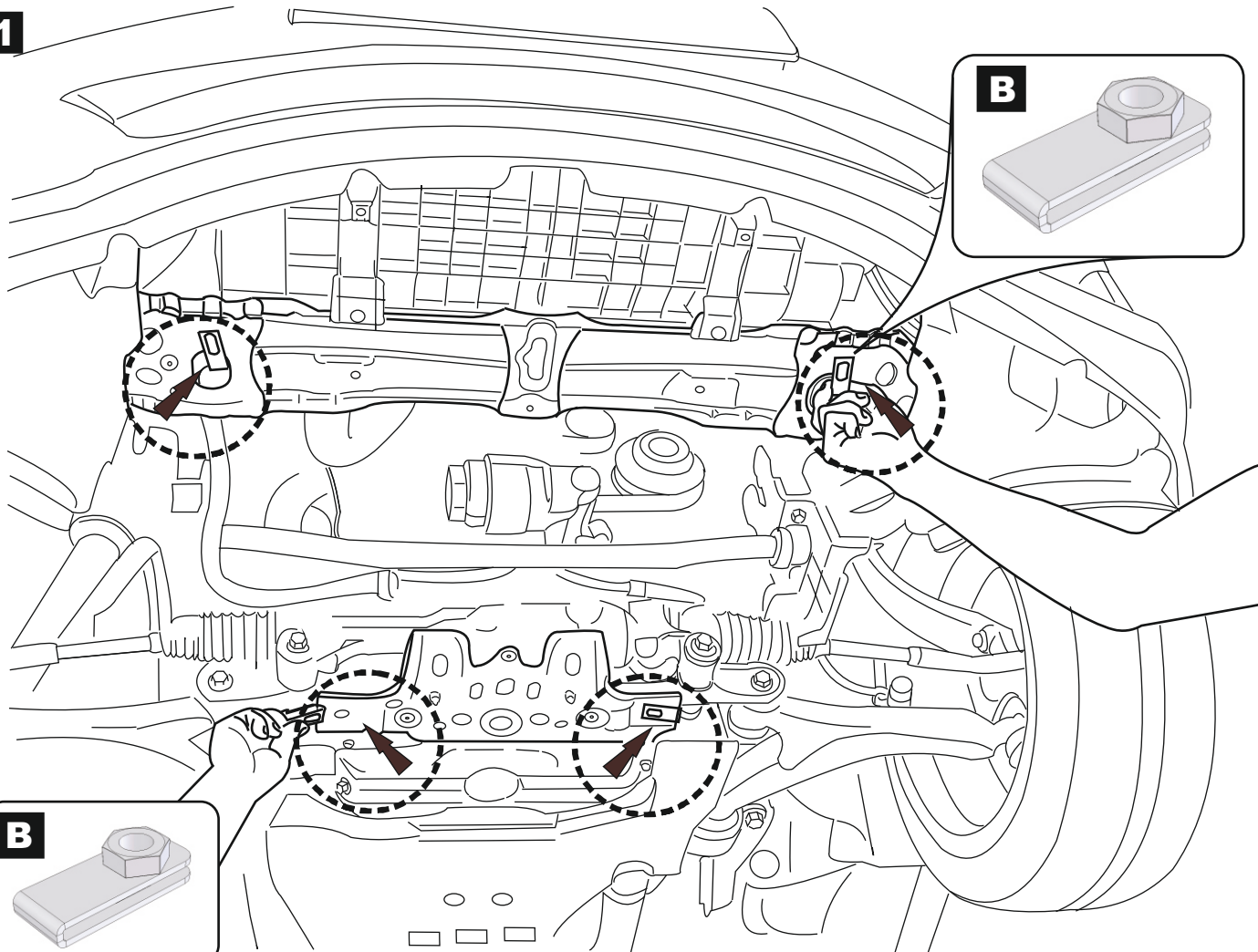
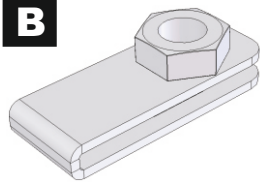
Date:
19/12/06

Manual reference number:
AIM 002 090-0

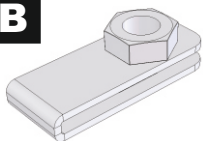
Page:
2/3

1

B



B



2



C

D2

C

D1

M10= 47 Nm

